

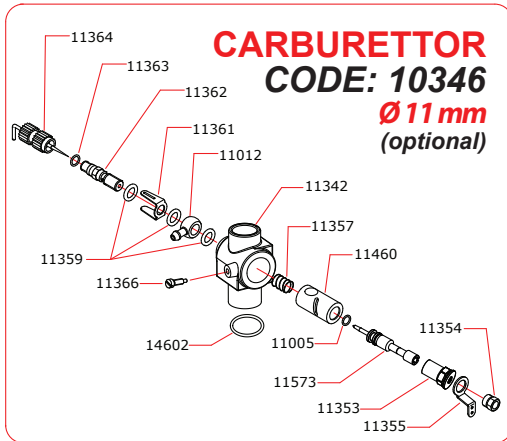
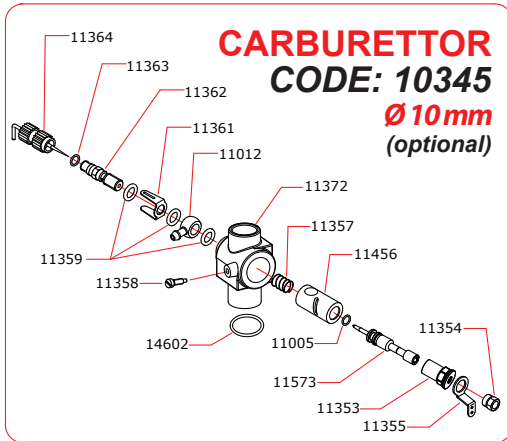
EXPLODED VIEW

R46F PYLON

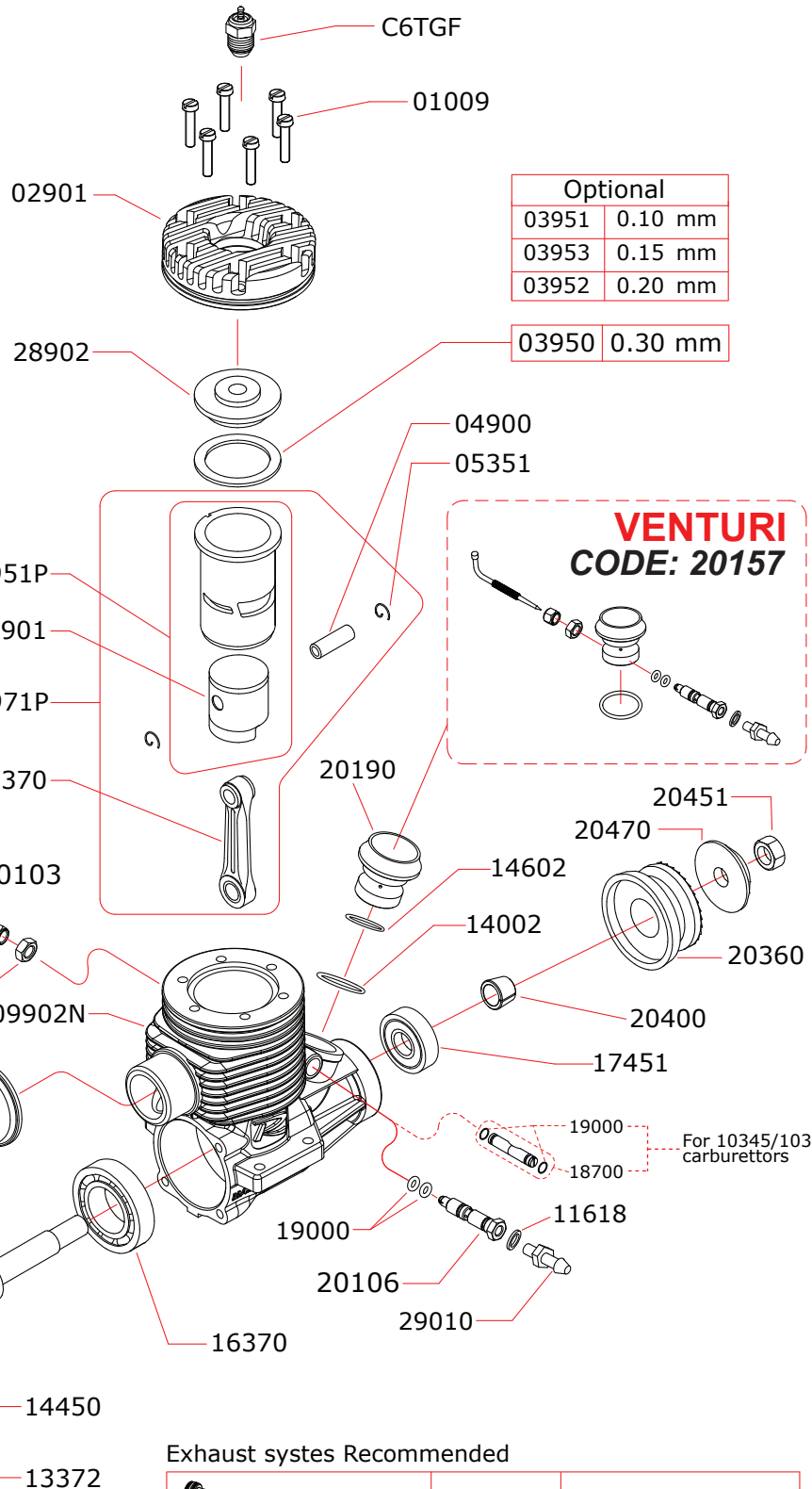
NOVAROSSI WORLD S.r.l.

Via Europa, 20/A - 25040 Monticelli Brusati (BS) - ITALIA
 web: www.novarossi.it | e-mail: info@novarossi.it
 Tel. +39 030/6850316 | Fax: +39 030/6850314

I disegni sono puramente indicativi / Drawings are just indicative.



Data ultima modifica:
 Date of last modification:
23-10-2015



Optional	
03951	0.10 mm
03953	0.15 mm
03952	0.20 mm

03950	0.30 mm
-------	---------

Manifolds Recommended

	40403	Ø20/17 curved, distance 38mm
	40904	Curved 15°
	40905	Curved 5°

Exhaust systems Recommended

	50904	Without silencer, tuned pipe with manifold.
--	-------	---

Pipes Recommended

	50900	Silenced
	50903	Without silencer